



This Issue

New Courthouse	P.1
Turning Around Downtown	P.1
Courthouse Features	P.2
Transportation Symposium	P.2
Solar Power at EDA	P.2

Turning Around Downtown: Twelve Steps to Revitalization

Source: *The Brookings Institute*

In March 2005, Charles B. Leinberger, a land use strategist and visiting fellow for the Brookings Institute, one of the nation's leading think tanks on public policy, authored a paper for the institute. Titled, *Turning Around Downtown: Twelve Steps to Revitalization*, the paper summarizes lessons learned from years of hands-on experience consulting in dozens of urban areas across the United States and Europe.

Leinberger wrote, "Though every downtown is different there are still common revitalization lessons that can be applied anywhere. While any approach must be customized based on unique physical conditions, institutional assets, consumer demand, history and civic intent, downtown revitalization requires a high degree of cooperation and is best achieved when a unique public/private process is used."

In future editions of the Downtown Core Vision & Action Plan Newsletter, the 12 steps to successfully rebuild and reinvigorate downtowns will be shared with readers.

Need more Information?

Click the link for the Downtown Core Vision & Action Plan at www.sbrda.org. To share your thoughts and ideas, contact Jeffrey Smith, Project Manager, via e-mail at jsmith@sbrda.org

Para información en español:

sobre planes de revitalizar el centro de San Bernardino, por favor de contactar a Roberto Chevez por teléfono, 909-886-8188, o por correo electrónico, rchevez@westboandcommunications.com



San Bernardino Courthouse. Design by SOM

New State Courthouse Coming to Downtown

Plans are well underway to open a new State Courthouse in Downtown San Bernardino in 2013 to better serve the needs of both City and County residents. On October 29, the public was invited to view the design and plans for the 11-story, 362,000 square foot facility, which will be built on a seven-acre site donated by the San Bernardino Economic Development Agency (EDA).

The new San Bernardino Courthouse, designed by the architectural firm of Skidmore, Owings & Merrill (SOM), consists of a 36-courtroom facility and 385 surface parking spaces for court visitors and staff as well as 40 secured parking spaces. Construction of the Courthouse will give the local economy a much needed shot in the arm and will be one of the major projects contributing to Downtown San Bernardino's revitalization efforts. At an estimated cost of \$349.1 million, construction of the courthouse is scheduled to begin in early 2011 and be completed by early 2013.

The Need

The historic San Bernardino County Courthouse, which was constructed in 1926 and is on the National Register of Historic Places, serves residents of the City of San Bernardino and the surrounding communities of Redlands, Fontana, and Twin Peaks through nine separate facilities. These facilities are overcrowded, lacking in security features now considered standard, and among the worst in the State in terms of their physical condition. The facilities cannot serve the growing demand for court services due to recent and projected population growth in the County. The deplorable conditions of the

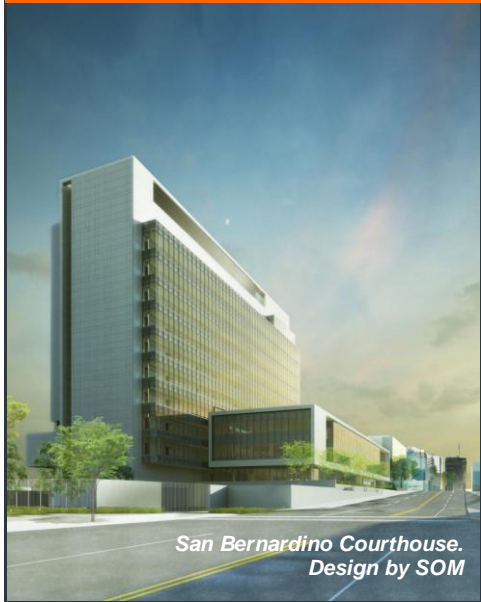
existing facilities and the public's hindered access to court services are among the reasons why the new San Bernardino Courthouse is urgently needed. Once the new Courthouse is built, the historic Courthouse will be used for civil matters and to a lesser capacity, making it a better facility.

Local Government Collaboration

In August 2006, the City of Bernardino and the San Bernardino County Board of Supervisors adopted resolutions to make contributions to the project. The EDA sold land to the State for one dollar and has agreed to relocate on-site utilities for this project. The county adopted a resolution to contribute approximately \$8.8 million to the project from funds originally budgeted for improvement of the existing facility. The County resolution included an equity value contribution of court-occupied space, with an estimated value of about \$2.7 million. These significant contributions from the County and EDA enabled the project to move more quickly into design and will reduce the overall cost to the State.



San Bernardino Courthouse. Design by SOM



New Courthouse Features

Some of the building's key features include the following:

Courtroom configuration: Four large courtrooms, 28 standard courtrooms, and three small courtrooms, plus two hearing rooms. Most courtrooms will accommodate juries, and all have access to holding facilities for in-custody detainees.

Sustainable design: With a minimum target of LEED Silver certification, the new San Bernardino Courthouse will seek to establish a sustainable model of development in the city. The design has carefully considered orientation, shading, material selection, and landscaping so that the building will thrive within its desert climate.

For more information:
www.courtinfo.ca.gov/programs/occm/projects_sanbernardino.htm

Questions or Comments?

The Downtown Core Vision & Action Plan Newsletter is prepared as part of the public outreach effort. If you have any questions or comments, please contact the Project Manager:

Jeffrey Smith, AICP
Economic Development Agency
TEL: (909) 663-1044
E-mail: jsmith@sbrda.org

For public relations & marketing inquiries, please contact:

Carrie Gilbreth
Westbound Communications
TEL: (909) 886-8188
E-mail: cgilbreth@westboundcommunications.com



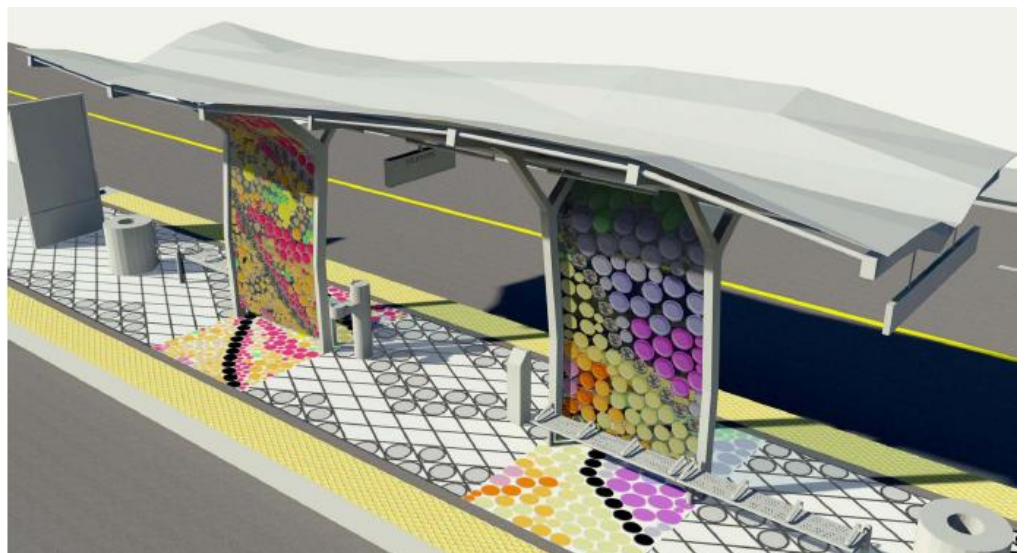
Leonard Transportation Center CAL STATE SAN BERNARDINO

Leaders Gather at CSUSB for Transportation Symposium

More than 100 people from throughout the Inland Empire and the state convened on November 6, 2009 at California State University, San Bernardino (CSUSB) for the second annual transportation symposium. This year's conference was renamed the Jack R. Widmeyer Transportation Research Conference in honor of Mr. Widmeyer's commitment to support faculty research and professional conferences related to transportation at CSUSB.

Presentations were given by educators, researchers, and public and private industry leaders about their perspectives on intermodal transit stations and transit-oriented designs as it relates to San Bernardino. Topics included mass transit options, such as rail and bus rapid transit, new traffic management technology, transportation energy efficiency and sustainable designs. Throughout the discussions, transportation was highlighted by many as playing a key role in the revitalization efforts for Downtown San Bernardino.

The symposium culminated with an art exhibit of Omnitrans' sbX Bus Rapid Transit Project in which the winning concepts for some of the BRT stations were on display. The sbX route is approximately 16 miles long and runs along the E Street corridor. The route travels from CSUSB to Loma Linda University and its medical facilities and the Veterans Administration Medical Center. For more information visit the sbX Project Web Site at www.estreet-sbx.com.



Proposed BRT Station for Hospitality Lane. Design by Urban Rock Design Team

Going Green: Solar Power Comes to EDA Building

In a shift toward renewable energy, the EDA is installing a solar, or photovoltaic, power system on the roof of its building. The system will generate approximately 245 kilowatts and will help to contribute to a cleaner, less-polluted environment in California by off-setting electrical generation by conventional fossil-fuel sources. Installation of the system will be completed in January 2010. Additional information regarding the project will be presented in future editions of the Downtown Core Vision & Action Plan Newsletter.



Economic Development Agency

www.sbrda.org

(909) 663-1044